



AGI FROST FANS PTY LTD
RELIABLE FROST PROTECTION

AGI Model:
E301

ELECTRIC FROST FAN / WIND MACHINE
30KW / 40HP



INFO@AGIFROSTFANS.COM | +27 21 873 0590
WWW.AGIFROSTFANS.COM



30kW (40HP) PERFORMANCE AND SPECIFICATIONS



- ▶ 7-9ha (17-22acre) coverage, depending on crop height
- ▶ Composite 3 blade fan
- ▶ Pivot system for ease of installation and maintenance
- ▶ Blade lock feature (STANDARD) reduces wear on moving parts
- ▶ Blades are aerodynamically designed and engineered for maximum concentration of air flow
- ▶ Fan can be powered from grid or generator
- ▶ Fans rotate at double the speed of conventional (ICE) fans

The technical specifications of our electrically-driven frost fans are as follows:

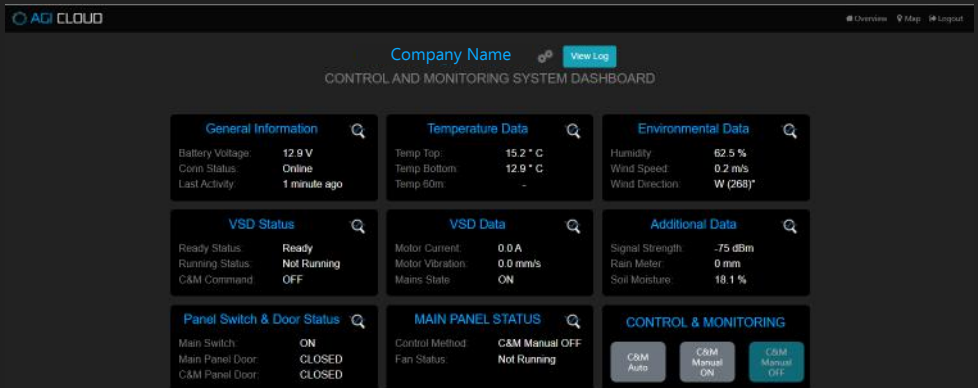
Fan diameter	4m (13ft)
Shaft power	27.6kW (37HP)
Fan rotation speed	900rpm
Noise level at 300m	53dB(A) - L.Req.T
Theoretical coverage wake limit	11.9ha (29acre)
Tested coverage	9ha (22acre)
Power demand grid (3 phase)	30kW (40HP) - 50kVA (60kVA genset)
Concrete foundation	7.7m ³ (10y ³)
Mast length	10m (33ft)
Warranty period	2 years on mechanical parts 1 year on electrical components

CONTROL AND MONITORING



- Custom designed software
- Live information and historic data available
- Data downloadable on excel format
- Control and monitor fans via AGI Live application for Android and Iphone
- Remotely adjust startup and shutdown parameters
- Connect via internet to cloud for continuous live data
- Alerts and warnings sent via email / sms to various contacts
- Remotely set wind cutout paramaters (average wind and gust)
- Various customizable alerts including, battery voltage, temperature, fan startup/shutdown, tampering alerts, mains failure, vsd error ect.
- Integrated wireless IoT sensors for monitoring temperature, soil moisture, liquid levels ect.

Our system uses a cloud-based monitoring system which is accessible from any internet enabled device.
All key functions are shown on a dashboard and data is available in real time. Historical data may also be exported.



Monitor every aspect of your fan and change parameters by the click of a button.

There is no limit to our innovation!



WHO WE ARE

AGI Frost Fans is located in the fruit handling and engineering hub, tranquil, small town of Wellington, Western Cape region, South Africa. Combined we have more than 30 years of experience in the fruit and wine industry and have used this knowledge and insight to design and manufacture the most efficient frost fan in the market. We are committed to continuous development and staying ahead of the competition.

Our 15kW (20HP) and 30kW (40HP) frost fans are fully electric and with the global movement towards a greener environment, AGI Frost Fans is the best option currently on the market.



PROTECTING YOUR INVESTMENT.

INFO@AGIFROSTFANS.COM | +27 21 873 0590

WWW.AGIFROSTFANS.COM

